

Rose Pouch Project for the Queens of the West

Rose Pouches for Our Queens - since it seems the Rose Pouches were such a hit with both our Queens and the other Kingdoms, it was decided that we should begin doing Rose Pouches for our Queens. These would be presented to each Queen upon her stepping down.

The project will be similar - a pouch with a 5 petal tudor rose design. The embroidered portion will be approximately 6"x6" and the overall pouch a couple inches larger. You will have the choice of embroidery methodology. A basic design and 2 basic charts are included in this document. Feel free to develop your own chart or design for a tudor rose or research other period designs. While it would be nice to have the design and embroidery methodology be historically accurate, it is not required for this project.

Each pouch should be turned in finished in a period style. If you have questions on construction, please ask and I will be happy to connect you with someone or discuss with you various methods. If you wish to do the embroidery and not the final sewing and finishing of the pouch, let me know and I will try and pair you with someone.

You should also feel free to embellish the embroidery. For example the seeding in the center may be gold chipwork or an outline of gold purl to accent the edging. You should also feel free to embellish the pouch, such as adding tassels, cording, bells, or other items evocative of period style pouches.

The background should be gold - the rose red - the leaves green - the center gold (seeded). The Guild will supply materials upon request.

Sign-ups - since we don't know who will be Queen, sign-ups will be for a specific delivery date. If you get the project done in advance, your piece may be used earlier than the date specified if someone misses their deadline. However, please endeavor to be early for my piece of mind. The first delivery deadline will be Purgatorio 2003. You may email me or sign-up at A&S, Oct Crown or 12th Night. Going forward the list will be available at Crown events.

Thank-you for your service to our Kingdom and our Guild..

Sabrina de la BERE

Minister, Kingdom of the West Needleworkers Guild

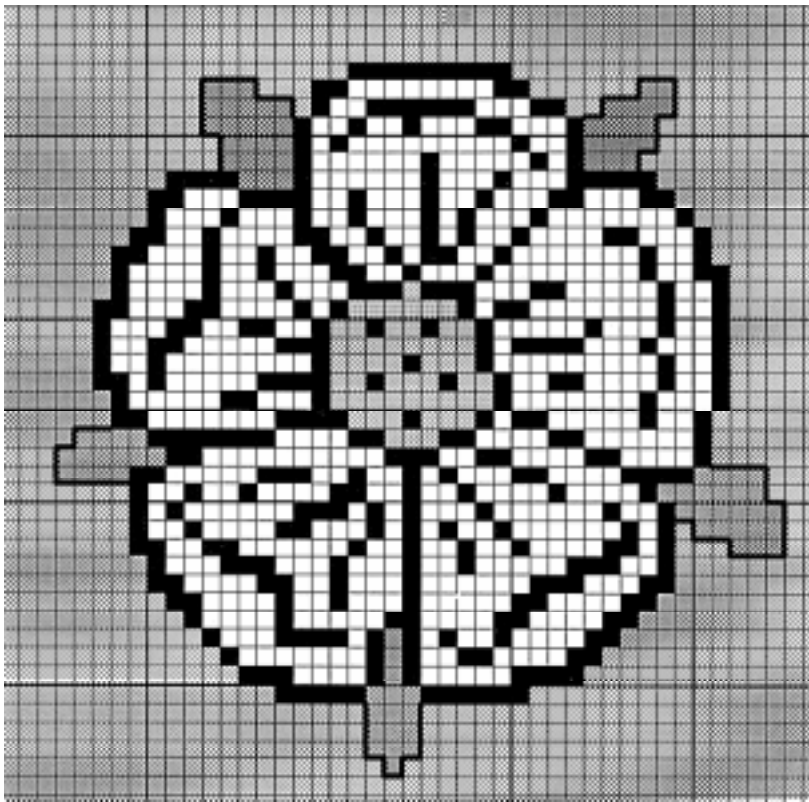
Website: <http://www.bayrose.org/wkneedle/>

Email List & Files: <http://groups.yahoo.com/group/WKneedle/>

Sponsored by

The Needleworkers Guild of the Kingdom of the West (SCA)

Disclaimer: This flyer is published by and for the Needleworkers Guild of the West Kingdom of the Society for Creative Anachronism, Inc. It is not a corporate publication of the SCA, Inc. and does not delineate SCA, Inc. policy. Copies of this brochure and other Needleworkers Guild literature may be obtained from Sabrina de la Bere, Guild Minister, P.O.Box 1809, El Granada, CA 94018; phone (650) 712-8405; e-mail <SabrinadelaBere@coastside.net>



In this graphic, Mistress Jania has charted a tudor rose. To accent various areas, she has used an outline of black.

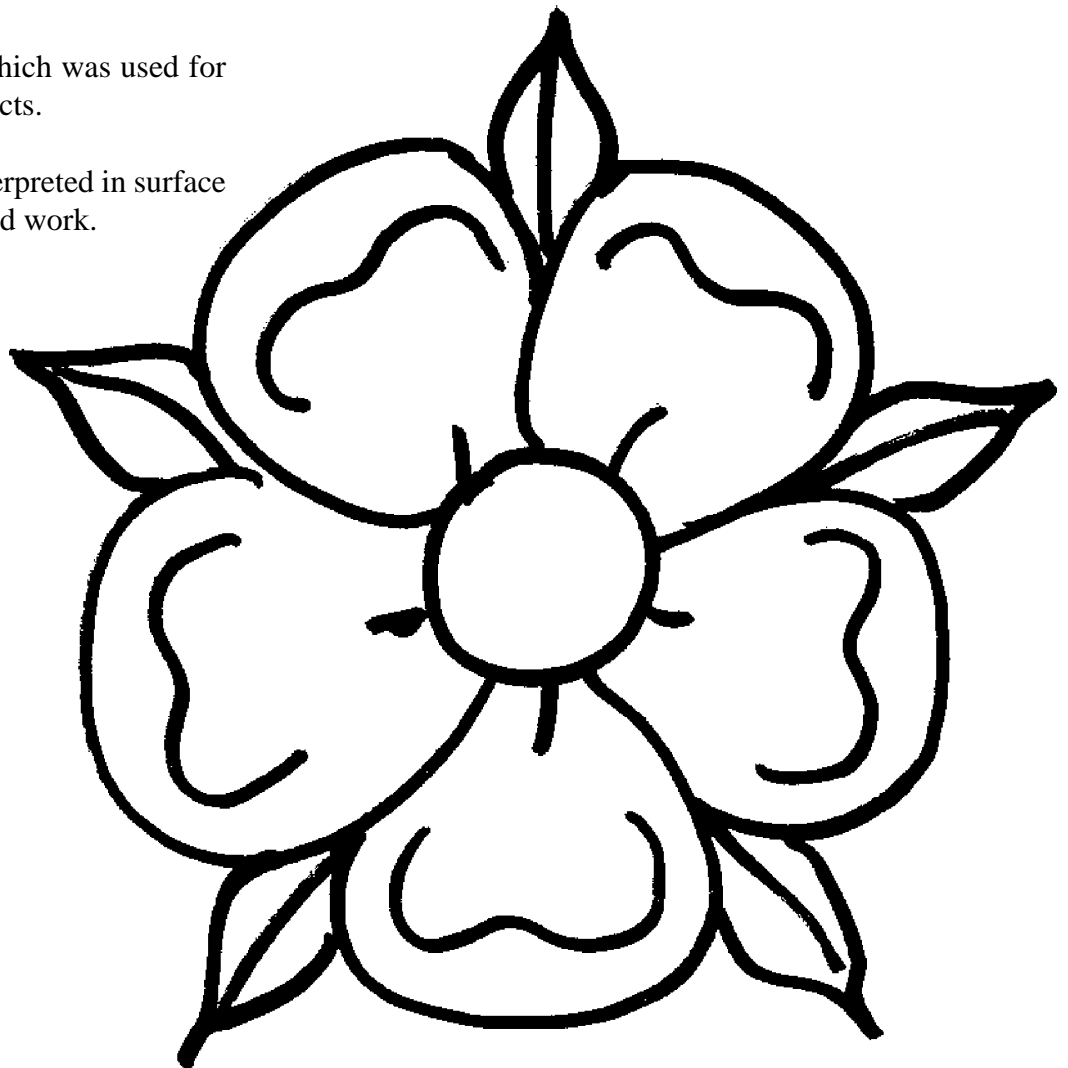
Size grade for this piece is 12 stitches to the inch and that will yield approximately a 4.5" rose.

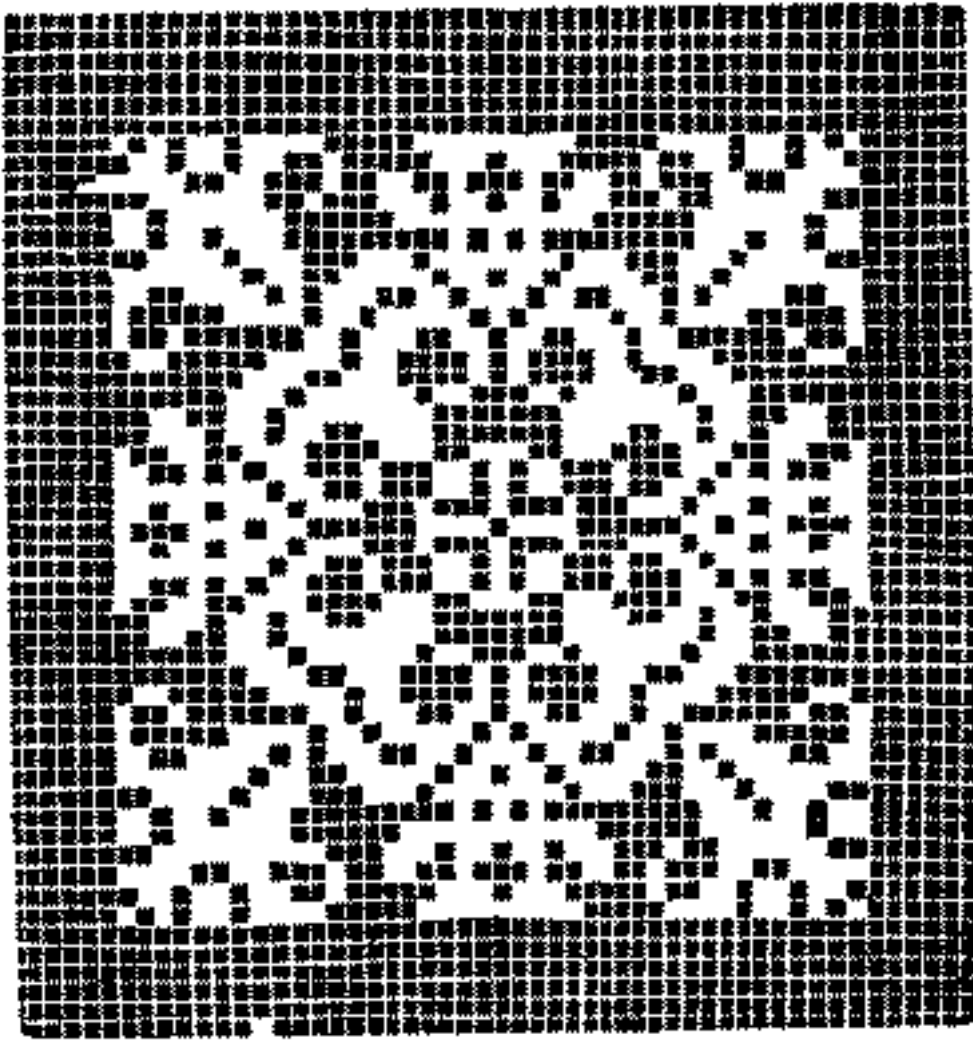
One interpretation of this piece would be Rose - white squares are red cross stitch, black squares are black cross stitch, center gray squares are gold cross stitch. The leaves would be in green cross stitch and then outlined with black thread in double running.

This chart can also be used for other counted thread methods such as blackwork or canvaswork. It can also be used for beading.

This is the full size pattern which was used for the Pennsic Rose Pouch Projects.

This graphic can easily be interpreted in surface embroidery, applique or raised work.





This graphic is from Vinciolo's pattern book. It could be used for any counted thread method or interpreted in a number of different lace techniques.